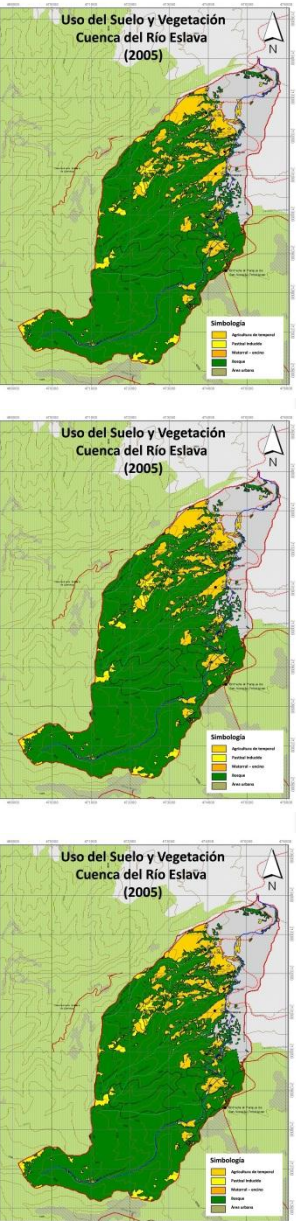


Volume 1. No.5. January - June 2014



Content	Pages
Land use and vegetation change (1970-2005) in Eslava river basin, Distrito Federal, Mexico. <i>Roldán-Aragón, IE y Sevilla-Salcedo, Y.</i>	1-9
Laboratory controlled production of <i>Brachionus patulus</i> Müller 1786, using three green unicellular microalgae as food. <i>Espinoza-Barrera U, Flores-Arizmendi AK, González-Pérez A, González-Velasco CJ, Castro-Mejía J, Castro-Mejía G y Castañeda-Trinidad H.</i>	10-16
Density population comparison of <i>Daphnia pulex</i> Müller, 1785 cultured in laboratory conditions, fed with three green unicellular microalgae (<i>Sphaerocystis</i> sp., <i>Chlorella vulgaris</i> and <i>Haematococcus pluvialis</i>). <i>Alcántara-Azuara AK, Contreras-Rodríguez AI, Reyes-Arroyo NE, Castro-Mejía J, Castañeda-Trinidad H, Castro Mejía G. y Ocampo-Cervantes JA.</i>	17-23
Population density comparison of copepods Order Cyclopida Burmeister, 1834 fed with microalgae and dry yeast in 200 L plastic beakers. <i>Castro-Mejía J, Castro-Mejía G, Castañeda-Trinidad H, Ocampo-Cervantes JA, Monroy-Dosta MC, Ramírez-Torrez JA. Orozco-Rojas DI.</i>	24-32
Salt dynamics on soils <i>Mata-Fernández I, Rodríguez-Gamiño, ML, López-Blanco J, Vela-Correa G.</i>	33-34